



<http://www.jstengfa.cn>

## 江苏腾发建筑机械有限公司

JIANGSU TENGFA CONSTRUCTION MACHINERY CO., LTD. CHINA

地址：江苏省泰州市海陵工业园区

Address: HaiLing Industrial park Taizhou, Jiangsu, China

服务热线 Service Line: 0523-86083000

销售热线 Purchase Line:

传真 Fax: 0523-86083590

网址 <http://www.jstengfa.cn>

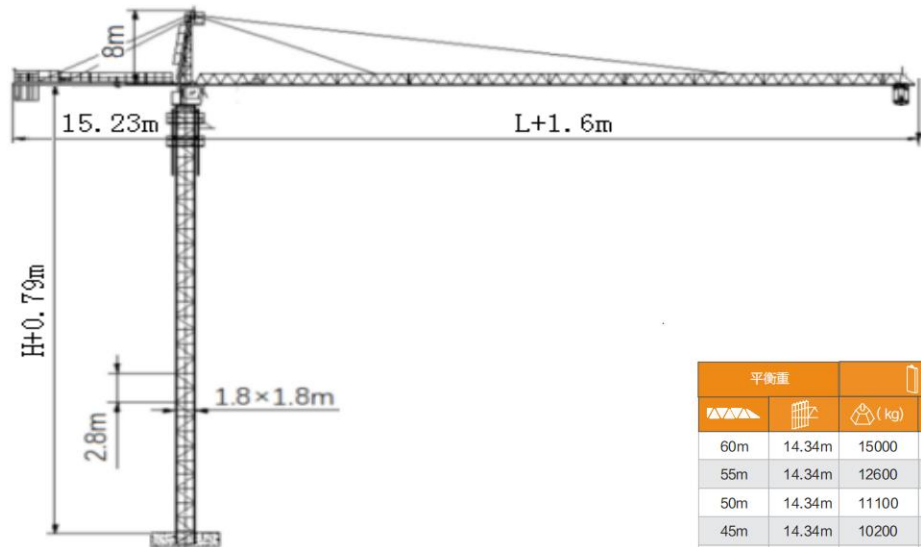
电子信箱: [zfdtengfa@sina.com](mailto:zfdtengfa@sina.com)

邮编 Code: 225300



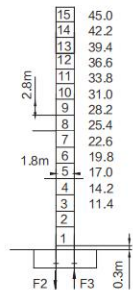
## 江苏腾发建筑机械有限公司

JIANGSU TENGFA CONSTRUCTION MACHINERY CO., LTD. CHINA



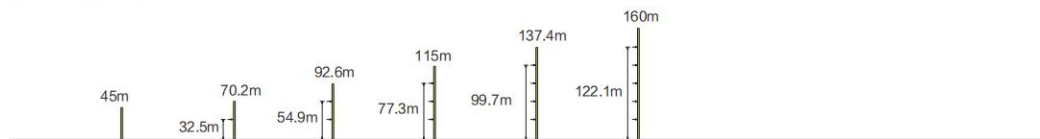
平衡重		2400 / 1500 kg		
▲▲▲	🏗️	📦 (kg)	PHZ2400	PHZ1500
60m	14.34m	15000	5	2
55m	14.34m	12600	4	2
50m	14.34m	11100	4	1
45m	14.34m	10200	3	2
40m	14.34m	8700	3	1

### 塔身 Masts / 反力 Reactions



- 工作状态反力 Reactions in service
- 非工作状态反力 Reactions out of service
- ⊕ 独立高度、最大起重臂的自重 (不含平衡重、吊重)  
Weight with max free-standing, max jib (without counter-weight and load)
- 独立高度最大压重重量






### 附着 Anchorages



### 起重特性 Load Diagrams

		Max Capacity m/t	18	22	27	30	36	42	48	54	60
60 (R=61.6)	⊔	3.0~21.34/5.0t	5.000	4.834	3.843	3.412	2.769	2.313	1.973	1.710	1.500
	⊔⊔	3.0~11.36/10.0	5.981	4.774	3.783	3.352	2.709	2.253	1.913	1.650	1.440
54 (R=55.6)	⊔	3.0~23.23/5.0t	5.000		4.229	3.758	3.056	2.559	2.187	1.900	
	⊔⊔	3.0~12.33/10.0t	6.568	5.251	4.169	3.698	2.996	2.499	2.127	1.840	
48 (R=49.6)	⊔	3.0~25.10/5.0t	5.000		4.612	4.101	3.341	2.802	2.400		
	⊔⊔	3.0~13.29/10.0t	7.150	5.723	4.552	4.041	3.281	2.742	2.340		
42 (R=43.6)	⊔	3.0~26.62/5.0t	5.000		4.923	4.381	3.573	3.000			
	⊔⊔	3.0~14.07/10.0t	7.624	6.108	4.863	4.321	3.513	2.940			
36 (R=37.6)	⊔	3.0~26.8/5.0t	5.000		4.900	4.413	3.600				
	⊔⊔	3.0~14.16/10.0t	7.680	6.153	4.900	4.353	3.540				

### 传动机构 Mechanisms

配置 Configuration			⊔		⊔⊔		kW	
 起升 Hoisting	QTJ125P	m/min	0~80	0~40	0~40	0~20	37kW	480m(6 layers)
		t	2.5	5	10	5		
 回转 Slewing	HP55.130.195	r/min	0~0.6				5.5kW×2	▲超出咨询我们 Consult us if overtop
 变幅 Trolleying	BP5565X	m/min	0~58				5.5kW	
	380V(±10%)50Hz	53.5 (kW)						